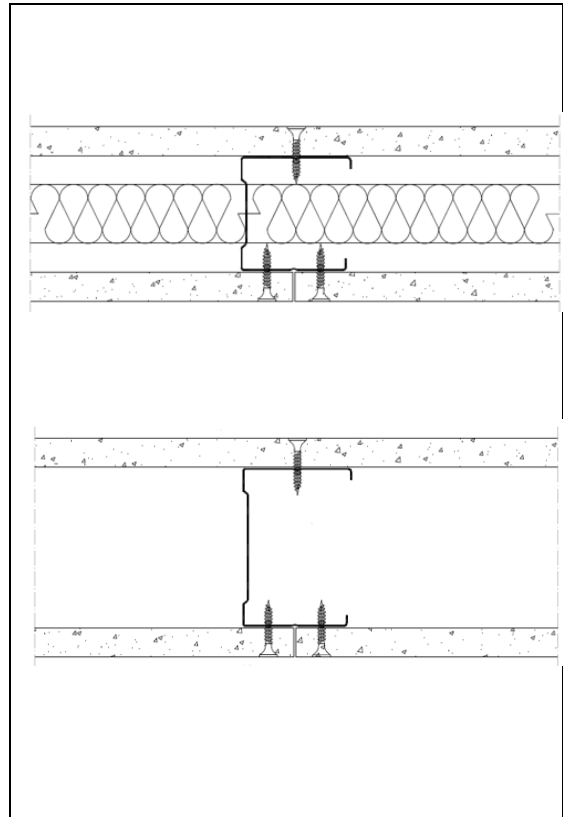
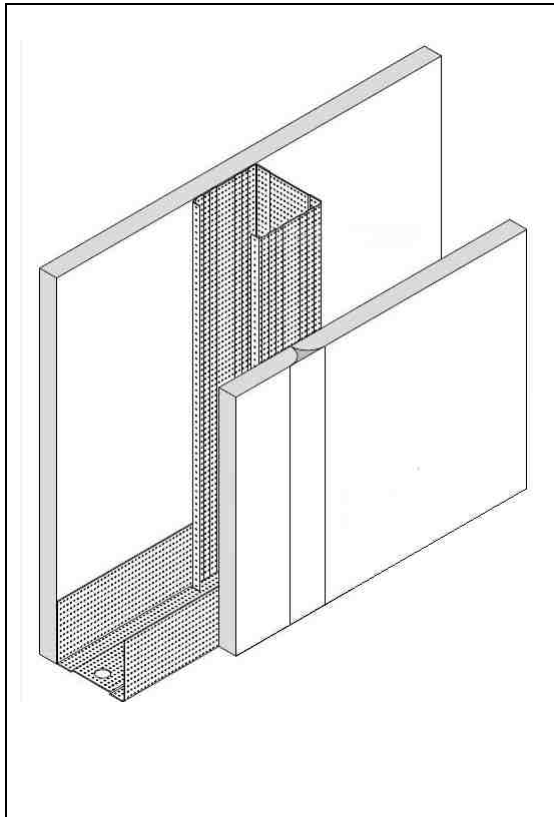


---

# ESP S1 partitions.

---

## Single stud single layer board partition system



### Application

Non loadbearing partition system suitable for residential, commercial, retail, hotel, education and leisure buildings. Offering the following advantages over traditional construction methods:

- Quick and easy dry build construction.
- Reduced wall thickness, increasing floor space
- Reduced construction weight
- Excellent performance for both fire resistance and sound insulation

U channels are fixed to floor and ceiling, studs are located inside the channels spanning floor to ceiling. Gypsum standard, fire, sound or specialist boards (to suit the performance requirements) are screw fixed to both sides of the studs and channels. Boards are sealed and finished to suit. Insulation can be located between the studs to enhance sound performance.

Water and electrical supplies can be easily located within the partition wall passing through the service cut outs in the studs.

Access panels can be located for easy access to services.

# ESP S1 partitions.

## **Installation:**

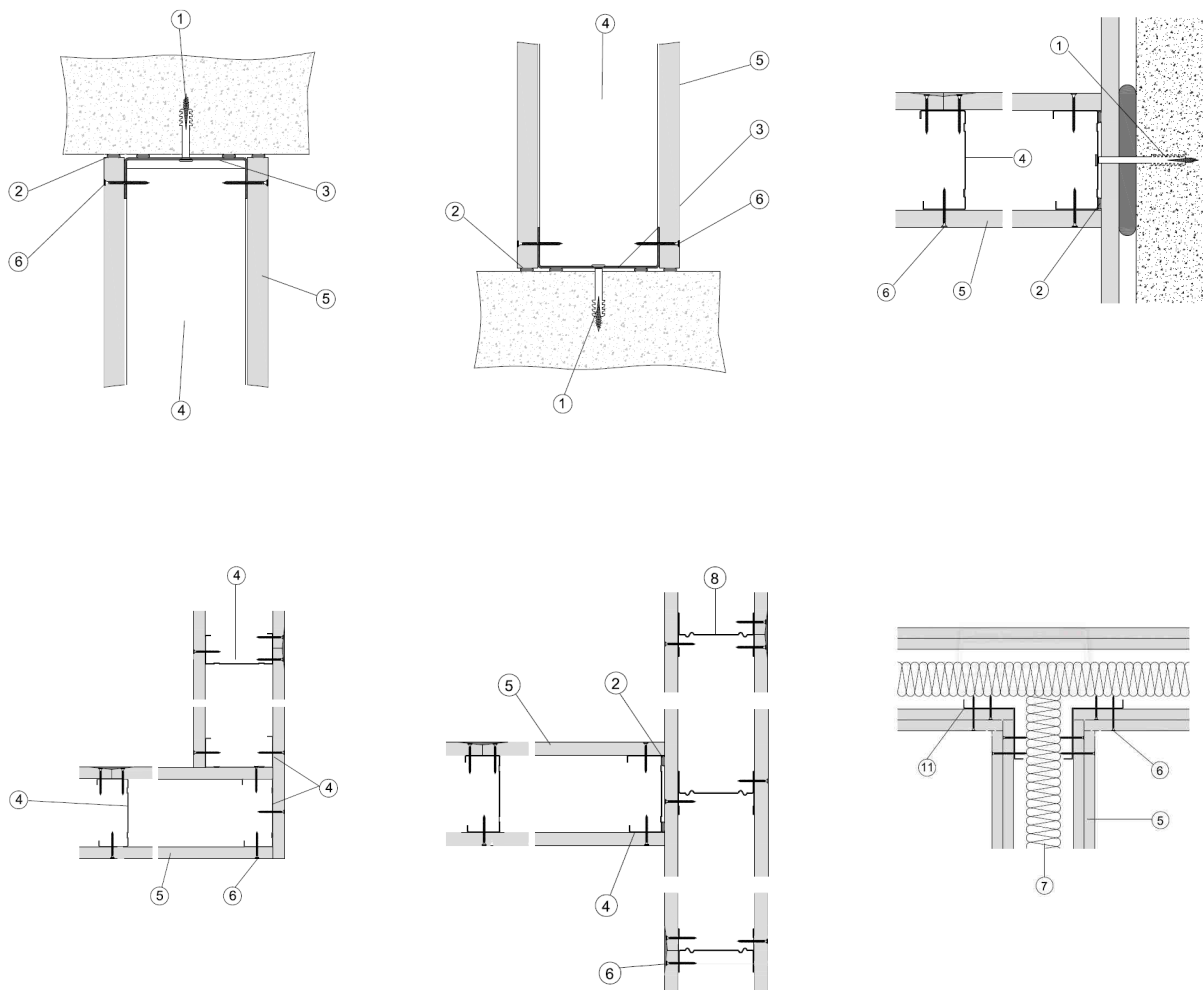
Mark the position of the partition on both floor and ceiling. Apply sealant to underside of U tracks and mechanically fix at 600mm centres. Fit C studs at abutment walls also with sealant and mechanical fixing.

Cut C studs to height of partition, making allowance for any deflection requirement. Locate the C studs into the U tracks at 600mm centres, reduced for high performance or heavy finishes / loads, such as in bathrooms or kitchens.

Screw fix boards to one side of the studs with drywall screws at maximum 300mm centres, reducing to 200mm centres at perimeter studs or channels. Where deflection is required at the partition head boards should not be directly screw fixed to the head track (see special fixing detail). Board should be staggered and fixing channel or plate should be located behind all horizontal joints.

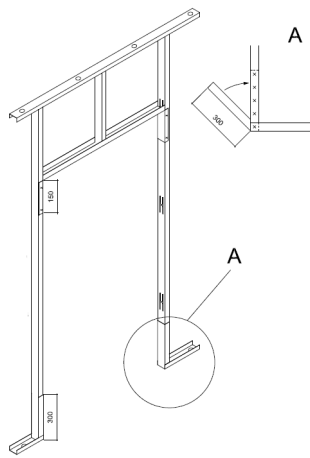
Services and insulation can be installed inside the cavity, following which the partition should be closed by fixing boards in the same way as detailed above to the second side.

## **Details**

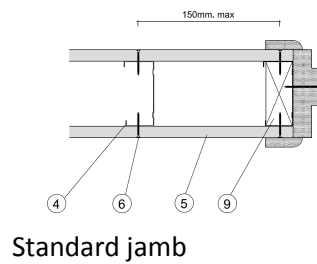


# ESP S1 partitions.

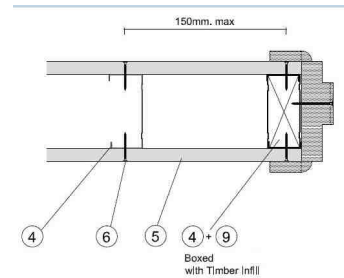
## Openings



Metal stud frame

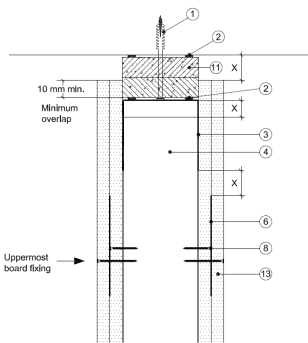


Standard jamb

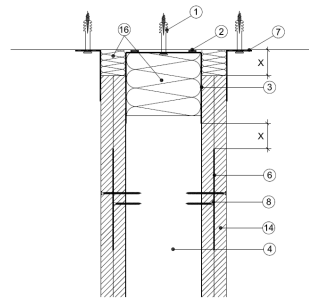


Heavy duty jamb

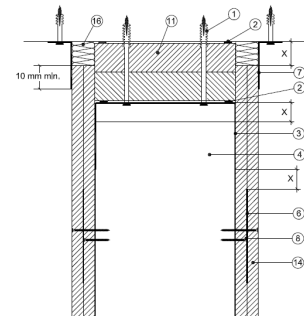
## Head Details



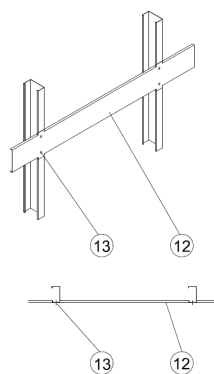
Deflection head a



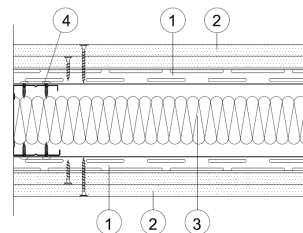
Deflection head b



Deflection head c



Fixing channel



Resilient bar both side C stud.

---

# ESP S1 partitions.

---

## Specification:

## Performance

### 1 hour fire rated.

BTC 21053F/k

Single layer 15mm Type F board both side ESP C studs.

C Studs,

32 /50 /34/ 0.5mm

32 /60 /34/ 0.5mm

32 /70 /34/ 0.5mm

32 /92 /34/ 0.5mm

32 /146/34/ 0.5mm

## DB ratings

SRLG 24480/2b

41 dB Rw = single layer 12.5mm Type D sound board.

SRLG 24480/5b

46 dB Rw = single layer 12.5mm Type D sound board with 25mm insulation

SRLG 24480/9k

43 dB Rw = single layer 12.5mm Type D sound board with 25mm insulation

SRLG 24480/14b

46 dB Rw = single layer 15mm Type D sound board.

SRLG 24480/15k

39 dB Rw = single layer 15mm Type F Fire board.

SRLG 24480/16k

44 dB Rw = single layer 15mm Type F sound board with 25mm insulation