



EUROPEAN STEEL  
PROFILES LTD



[www.espdrywall.co.uk](http://www.espdrywall.co.uk)



**01753 306 050**



[info@espdrywall.co.uk](mailto:info@espdrywall.co.uk)



# European Steel Profiles

A comprehensive range of drywall profiles and solutions

# INTRODUCTION

- ❖ Manufactured and supported in the UK
- ❖ Products that meet Acoustic, Humidity Resistant & Fire Rated specifications
- ❖ National deliveries within 48 hours, London next day
- ❖ Extensive stock holding (over £500k)
- ❖ Extended day for early & late collections with great access for vehicles
- ❖ Bespoke lengths processed providing savings in time and waste

## DRYWALL METAL PROFILES

- ❖ The comprehensive range of drywall profiles manufactured by ESP includes all standard “C” Studs, “U” track, Furring Systems, Lining Systems, I Studs, Resilient Bar, Acoustic Studs, European Dimension Studs, SFS profiles, Treated Support Systems (for humid areas), all complemented by components and fixings.



# ESP PERFORMANCE

## Performance



We are pleased to confirm that the ESP drywall range of systems and profiles are manufactured in accordance to BS EN 14195:2005 being the European standard for the production of metal framing components for gypsum plasterboard systems. These are supplied CE with CE marking.

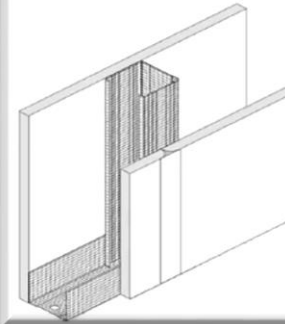
The scope of this standard specifies the characteristics of the metal framing sections used in conjunction with plasterboards (conforming to EN520) used to build non-load bearing partitions, wall and ceiling linings.

We confirm that in accordance with the European standards, all products are manufactured using galvanized steel coils DX51D as BSE EN 10326 and 10327. The reaction to fire is classified on Euroclass A1 being "No contribution to fire."

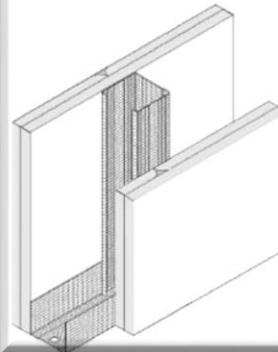
Declaration of Performance (DoP) specification data sheets and safety data are available for all products all in accordance with BS EN 14195.

The primary factor in determining fire and acoustic performance in partition walls and ceilings is the correct specification to the board used for the lining construction along with other factors such as perimeter sealing, type of cavity insulation and board fixing method all of which have a major effect on the overall performance of the total system.

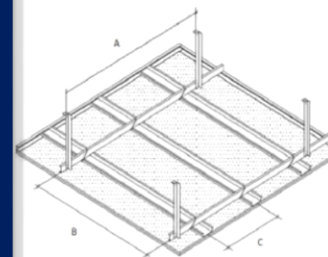
Our products offer equal performance to products from other primary producers manufactured to the same high standard and quality. We are pleased to advise on project requirements but no warranty is hereby expressed or implied and we do not accept liability where products are installed prior to an agreed specification being agreed and supplied in writing.



ESP Single stud with a single layer 15mm Type F Fire board both sides. Non Loadbearing partition system suitable for residential, commercial, retail, hotel, education and leisure buildings



ESP Single stud with a double layer Type F Fire board both sides. Non Loadbearing partition system suitable for residential, commercial, retail, hotel, education and leisure buildings



A concealed suspended ceiling grid system suitable for most internal dry-lining ceiling applications. Suitable for domestic, commercial & industrial buildings. The system comprises of a concealed metal framework which is suspended from the structural soffit using galvanized angle section & angle cleats. Fire rated with Type F Fire board. Details on request.

# QUALITY DRYWALL PROFILES

- ❖ Manufactured in accordance to BS EN 14195 (European Standard)
- ❖ ISO 9001 Quality Management
- ❖ **fermacell Profiles**
- ❖ Treated support systems (for swimming pools)
- ❖ Lining systems (for external wind loads)
- ❖ SFS High Bay walls
- ❖ Declaration of Performance specification data for all products



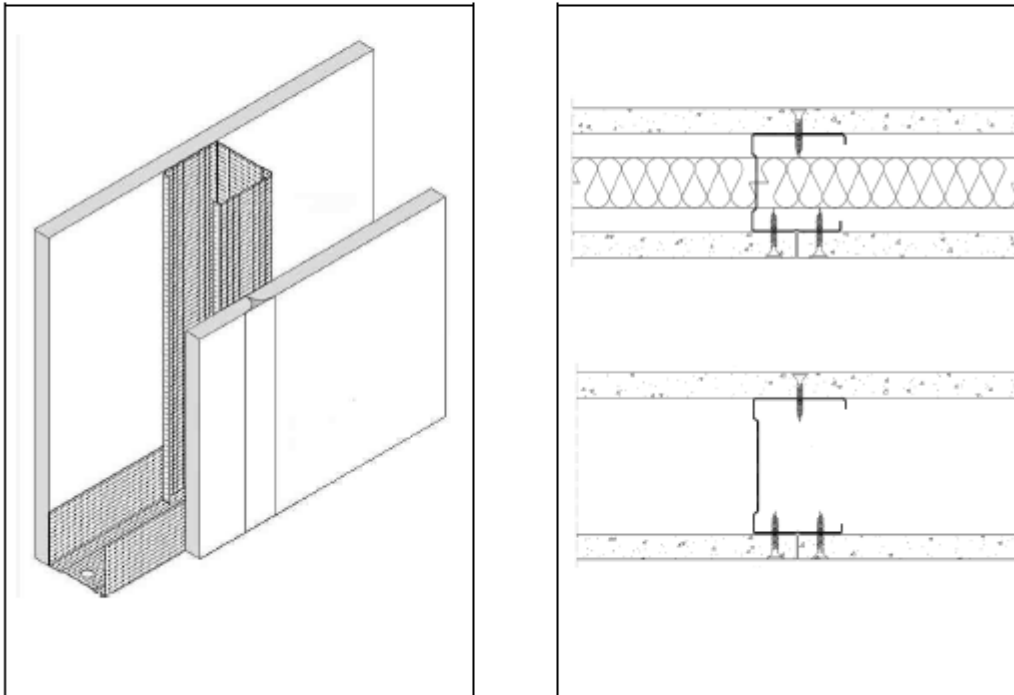
Provider to stadium solutions



# DATA AND SOLUTIONS

## ESP S1 partitions.

Single stud single layer board partition system



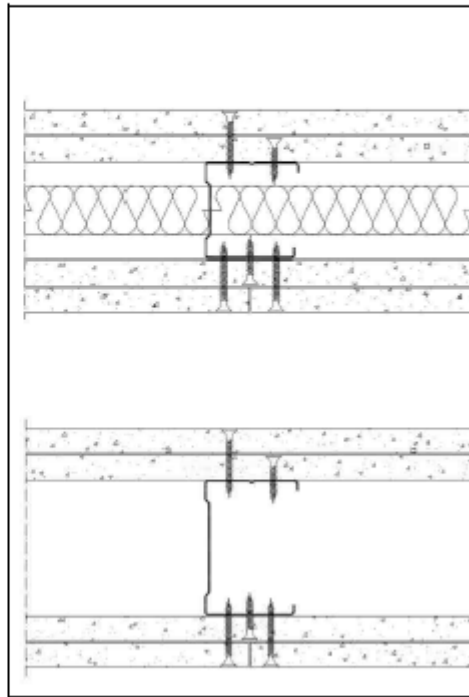
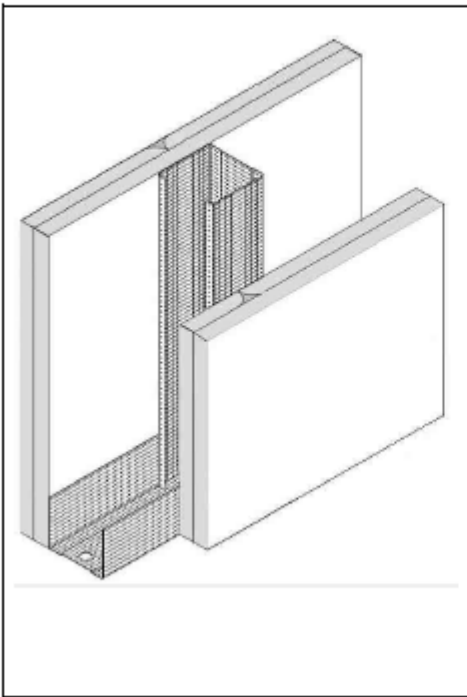
Non Loadbearing partition system suitable for residential, commercial, retail, hotel, education and leisure buildings. Offering the following advantages over traditional construction methods:

- ❖ Quick and easy dry build construction
- ❖ Reduced wall thickness, > floor space
- ❖ Reduced construction weight
- ❖ Excellent performance for both fire resistance and sound insulation
- ❖ “U” channels are fixed to floor and ceiling, studs are located inside the channels spanning floor to ceiling. Gypsum standard, fire, sound or specialist boards (to suit performance requirements) are screw fixed to both sides of the studs and channels. Boards are sealed and finished to suit. Insulation can be located between the studs to enhance sound performance.

# DATA AND SOLUTIONS

## ESP D1 partitions.

Single stud Double board partition system



Non Loadbearing partition system suitable for residential, commercial, retail, hotel, education and leisure buildings. Offering the following advantages over traditional construction methods:

- ❖ Quick and easy dry build construction
- ❖ Reduced wall thickness, > floor space
- ❖ Reduced construction weight
- ❖ Excellent performance for both fire resistance and sound insulation
- ❖ “U” channels are fixed to floor and ceiling, studs are located inside the channels spanning floor to ceiling. Gypsum standard, fire, sound or specialist boards (to suit performance requirements) are screw fixed to both sides of the studs and channels. Boards are sealed and finished to suit. Insulation can be located between the studs to enhance sound performance.

# SFS HIGH BAY WALLS



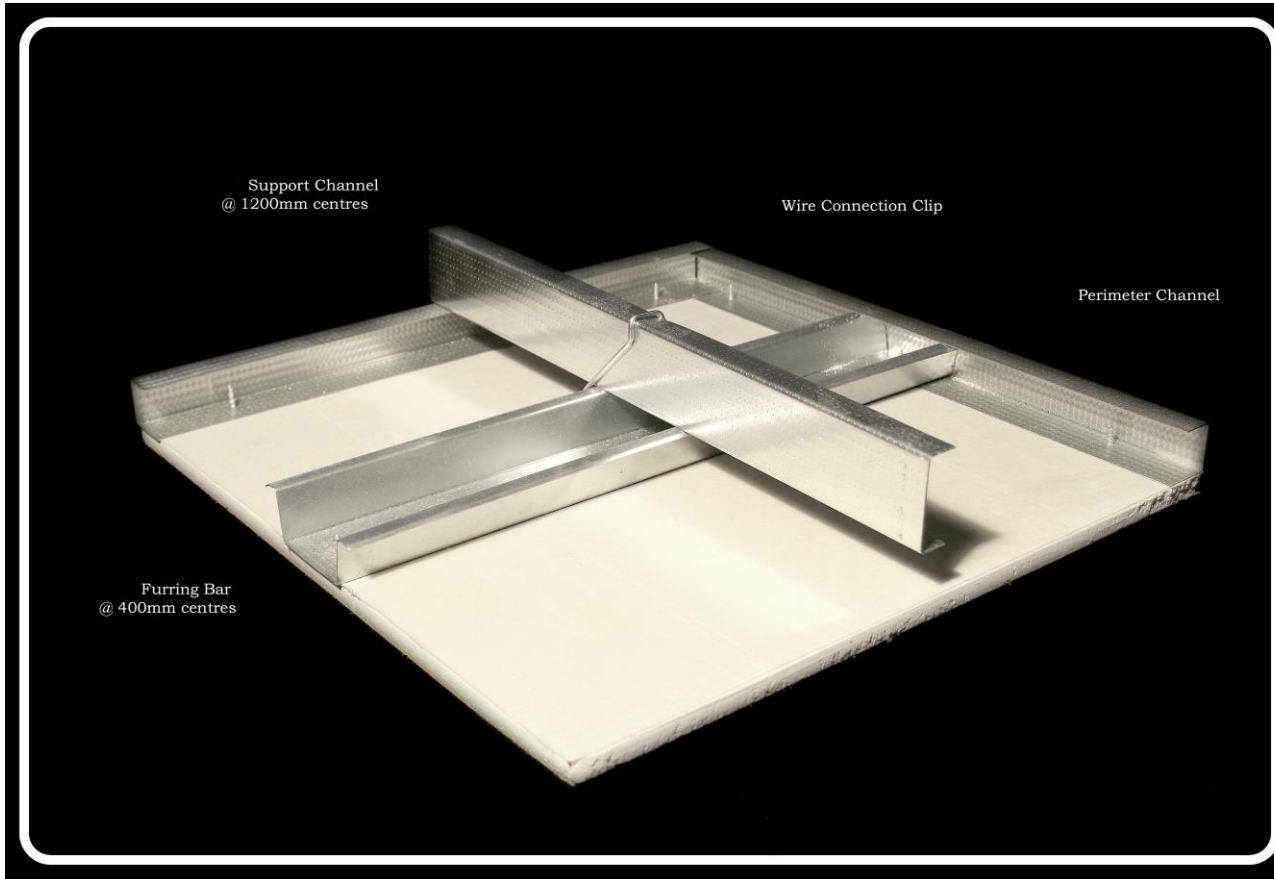
ESP's High Bay wall profiles can provide high separating walls usually found in factory units, sports halls, and warehouses.

Our high bay walls can be up to 18m high and because of the lightweight construction, rarely need additional foundations underneath the wall.

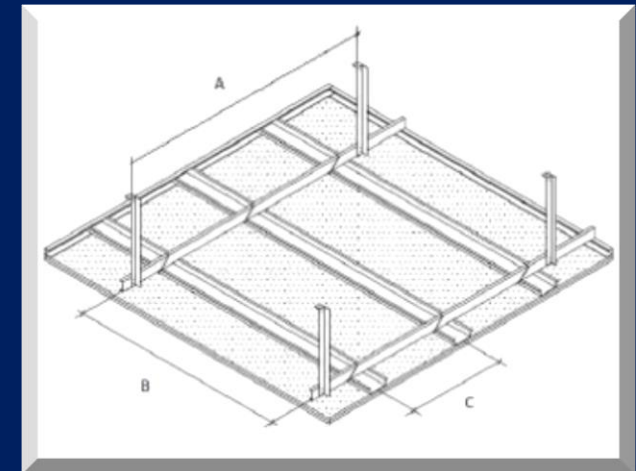
ESP can offer a variety of profile sizes with studs ranging from 70mm up to 350mm in gauges from 1.2mm to 3mm.

Our technical team will also review specific design criteria including wind-loading, fire resistance and acoustics.

# METAL FURRING CEILING SYSTEM



- ❖ A concealed suspended ceiling grid system suitable for most internal dry-lining ceiling applications. Suitable for domestic, commercial & industrial buildings. The system comprises of a concealed metal framework which is suspended from the structural soffit using galvanized angle section and angle cleats.




# FERMACELL PROFILES

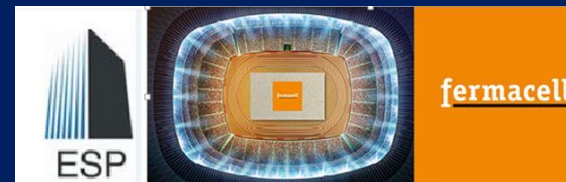


fermacell®

fermacell Steel Profiles

- ❖ fermacell's unique range of 0.6mm standard steel studs, head and base tracks and reinforcement profiles are manufactured by ESP to meet the most demanding designs and building regulations.
- ❖ Warranted & tested to meet Acoustic, Humidity Resistant & Fire Rated specifications when used with fermacell gypsum fibreboard to provide a complete system.

PERFORMANCE RATINGS			
	41	71	
	dB	dB	
	30	120	
	mins	mins	





## THE ESP TEAM

- ❖ The Directors hold over 60 years experience in Drywall manufacturing
- ❖ The team provide a wealth of experience in reliable distribution
- ❖ Friendly, Approachable sales & technical team
- ❖ Nationwide approved network of Delivery Contractors



## SUMMARY

- ❖ National Delivery service within 48 hours, London next day
- ❖ Quality accreditation & GDPR Compliant
- ❖ Bespoke profiles readily available on request
- ❖ Fermacell & Treated systems
- ❖ DOPs available on request & on our web site
- ❖ Large stockholding with extended day for early & late collections with great access for vehicles

[www.espdrywall.co.uk](http://www.espdrywall.co.uk)